



**ethical
power**

Renewable energy
development
specialists

Helping you unlock the potential of your land

www.ethical-power.com

We are Ethical Power



Ethical Power was established in 2010 as a rooftop solar company. We have since grown to a global renewable energy company. We develop, construct, and operate various renewable energy technologies across the UK and internationally, from small private-wire projects to large utility-scale systems.

We specialise in the development of solar PV and battery energy storage with in-house expertise for a wider range of renewable technologies and innovation. Our portfolio includes over 1GW of development projects and we have over 500MW capacity currently in the pipeline for construction globally.



We work closely in partnership with landowners to ensure projects are delivered efficiently, on time, and with minimal disruption to land.



Our team



Spencer Jansen
Managing Director

Spencer has over 30 years' experience at the forefront of the solar and energy storage industry in the UK. A true innovator, he is regularly consulted by investors, equipment manufacturers and technical consultants.



Steve Cains
Director of Development

Steve leads the team, overseeing the development projects and managing investor and partner relations. With 20 years of experience in the sector, he believes in collaborative approach and ensures all projects maximise local benefits.



PJ Rogers
Land
Partnerships
Manager

PJ dedicates himself to building long-lasting partnerships with landowners of our current and future projects. Deeply engaged with the farming community, he brings a profound commitment to preserving the British countryside. His roots on a farm have instilled in him a genuine passion and comprehensive understanding of the sector.



Paul Munday
Grid
Connection
Manager

Secure and correct effective grid management is key to project success. Paul is our grid connections specialist and is involved in projects from the very beginning to the end, assisting in our site searching process.



Phil Gordon
Planning
Manager

As the planning manager, Phil ensures our projects adhere to the relevant regulation and are developed with local communities in mind. He manages every stage of the planning application process from drafting the documentation to speaking to local residents about the future projects.



Neale Bryan
Development
Design
Manager

Neale is the creative process within the team, ensuring projects are designed to meet optimised physical layout utilising the latest renewable technology for the benefit of all stakeholders.

Generally balancing practical goals with respect to all constraints particularly Grid, Planning & land to achieve successful designs to the "shovel ready" stage.

Our renewable energy process



Development

We use state of the art site-finding software to identify land parcels available for a renewable energy development. We then conduct a site survey to gather all the basic information about your land and its potential for renewable energy. We also speak to you – the landowner – to understand your requirements with regards to the project.

From this, we can conduct a detailed review and survey of your site, understanding the grid and planning environments of the area. Once this is established, we then start the process of agreeing legal documentation so that we can conduct further site surveys and designs for the planning application process.



Operations

Our Operations and Maintenance team will look after the project throughout its operational lifetime. The team provides expert services keeping the site performing safely and to the highest standard. They ensure that the site is fully maintained and monitored 24/7 and that any issues are dealt with quickly.



Construction

Once planning permission has been approved, the site will be put into the hands of our Construction team. They will oversee the detailed design, build and commissioning of the project, from the foundations to energy generation, while limiting disruptions to you and your land.



Decommissioning

Renewable energy projects normally operate for up to 40 years. At the end of the recommended lifespan, the site can either be repowered or decommissioned, depending on the contract and your wishes. If the project is decommissioned, the land is restored to its original state by us. The tenant's decommissioning responsibility is defined in the contract, but as the landowner, you are additionally protected with a bond or insurance for decommissioning cost.

Fees and payments

Solicitor and agent fees will be covered by us! You can expect annual rental payments, e.g., up to £1000/acre for solar projects and up to £2000/MW for battery energy storage. We will also pay additional lump sum payments at key stages of the project.

Biodiversity and land use

Our projects include land enhancement activities that will improve the quality of the soil and the biodiversity of the site. For solar projects, the land can usually still be grazed by sheep.



Working in partnership

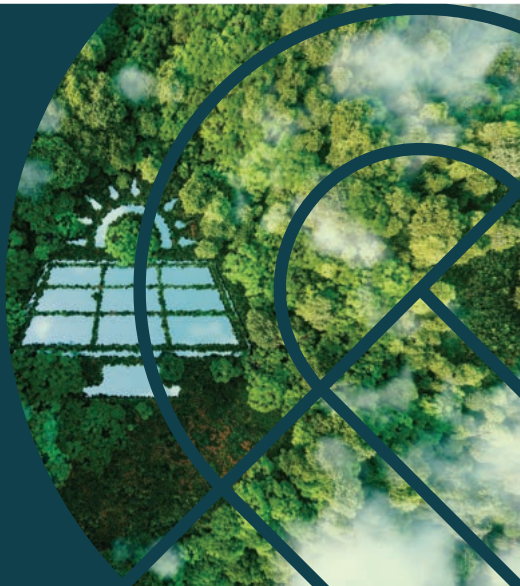
A partnership between Ethical Power and landowners presents a unique and advantageous collaboration.

We are committed to sustainable development practices, ensuring that renewable energy projects prioritise environmental responsibilities.

Aligning with farmers and landowners, we want to establish mutually beneficial relationships where renewable energy infrastructure can be integrated with agricultural landscapes. These partnerships allow farmers to diversify their income streams but also promote the sustainable use of agricultural land.



Renewables can work side by side with nature. Our development projects carefully consider biodiversity and the needs of the land and include plans to enhance wildlife and create new habitats. We work with the landowners to ensure the most beneficial solutions are used.



Our projects



Below are examples of projects we have undertaken and some of the clients we have worked over the years.

1

Broxburn BESS

Client: ENGIE
Size: 50MW

Contract: Development
Status: In construction

Ethical Power developed the 50MW Broxburn BESS alongside its partners Hive Energy, Sirius Group and EcoDev Group. ENGIE purchased Broxburn BESS at ready to build stage with approved grid connection and energisation expected in H2 2024.

2

Bulkworthy Solar Park

Client: Ecotricity
Size: 7.82MW

Contract: Engineering, Procurement & Construction (EPC)
Status: Energised December 2022

Bulkworthy is a hybrid wind and solar site. The solar park was built by Ethical Power in December 2022, complementing four wind turbines installed back in 2014. The project was constructed around an archaeological discovery and has been completed with hedgerows and grass to support biodiversity.

3

Bowerhouse II Solar Farm

Client: Kent County Council
Size: 21MW

Contract: Development, Design, EPC
Status: Energised October 2022

Bowerhouse II Solar Farm is a 21MW project built across 38 hectares of land in North Somerset and with 39,000 bifacial solar modules installed. Ethical Power developed and designed the Bowerhouse II solar park. The project was acquired in ready to build state by Kent County Council in April 2022. Ethical Power remained involved with the project as the EPC (engineering, procurement and construction) contractor through its UK Construction arm.

FAQs

Is my site suitable?

We have in-house expertise in the areas of planning and grid and will assess site for suitability.

How long does the process take?

All projects are different and will range in size and complexity, but the process can typically take around 18 months from inception to build.

When will I get paid?

Lease payments are either paid quarterly or annually with construction rent provided during the initial phase. All rent payments are index-linked for the lifetime of the project.

What happens after the leasing period?

The site owner will be legally responsible for the removal of all equipment when the lease comes to an end and the land will be returned to its original condition.

Can I sell my land?

Yes, you can. All payments along with the lease agreements will be transferred to the new owner.



Get in touch

Contact our team for a chat about your own renewable energy development.



Steve Cains
Director of Development



Steve.Cains@ep-development.com



07769 281794



PJ Rogers
Land Partnerships Manager



PJ.Rogers@ep-development.com



07783 780109

Feel free to contact us at
www.ethical-power.com or
email enquiries@ethical-power.com

